



Spelling and Reading:

Common Exception Words

Learning from Home
Activity Booklet



Year 2 Programme of Study – Spelling, Punctuation and Grammar

Statutory Requirements	Activity Sheet	Page Number
Pupils should be taught to read further common exception words, noting unusual correspondences between spelling and sound and where these occur in the word.	Year 2 Common Exception Words	1
	Common Exception Words Bingo	2, 3, 4
	4 in a Row Game	5
	Word Search	6
Pupils should be taught to spell common exception words, noting unusual correspondences between spelling and sound and where these occur in the word.	Syllable Search	7
	Word Families	8, 9
	Unusual Graphemes	10

Note for Parents and Carers

In Year 2, children add to the list of 'common exception words' that they began to learn in Year 1. These words are a combination of the most commonly used words in reading and writing, and some words that do not follow phonetic rules. The list of common exception words continues to be added to as children progress through school.





Year 2 Common Exception Words



after

could

hour

path

again

cold

improve

people

any

door

kind

plant

bath

even

last

poor

beautiful

every

many

pretty

because

everybody

mind

prove

behind

eye

money

should

both

fast

most

steak

break

father

move

sugar

busy

find

Mr

sure

child

floor

Mrs

told

children

gold

old

water

Christmas

grass

only

whole

class

great

parents

who

climb

half

pass

wild

clothes

hold

past

would



Common Exception Words Bingo



Print out the common exception words, cut them up and put into a hat or a bowl. Print and cut out the bingo cards and choose one for each player. Take it in turns to pick a word from the hat and read out loud. If players have it on their card, they cross it off. The winner is the first person to cross off all the words on their card. There are blank cards too so you can make your own.



Bingo Card 1

money		even
	whole	
poor	would	people
		again

twinkl.com



Bingo Card 2

	parents	
pretty		should
both	steak	
		gold

twinkl.com



Bingo Card 3

bath		kind
	hold	
children	improve	
	plant	father



Bingo Card 4

most		clothes
	kind	break
fast	eye	
	every	



Bingo Card 5

	because	
	prove	wild
sure		hour
both		old



Bingo Card



Bingo Card



Bingo Card



Bingo Card

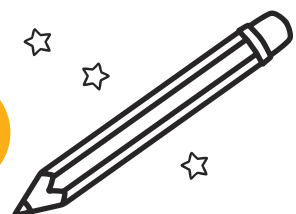


Bingo Card

4 in a Row Game

You will need a set of two different coloured counters (around 10-15 of each colour). Coloured sweets, small toys or coins will do if you don't have counters. Fill a hat, bag or bowl with the bingo word cards before taking turns to pull out a word. If you can read it, you can place a coloured counter on the board. The aim of the game is to get four counters in a row, horizontally, vertically or diagonally.





Word Search

c	o	u	l	d	a	u	s	u	g	a	r
h	q	p	y	p	e	o	p	l	e	d	s
i	j	k	i	n	d	u	b	g	w	l	m
l	g	p	v	y	p	r	e	t	t	y	p
d	d	r	c	p	y	t	a	l	h	m	h
r	d	o	o	s	h	o	u	l	d	e	p
e	x	v	x	e	w	a	t	e	r	e	a
n	q	e	h	c	j	q	i	k	r	v	r
i	z	r	a	o	f	k	f	w	b	l	e
f	o	z	b	e	c	a	u	s	e	t	n
z	l	i	a	w	h	o	l	e	n	h	t
r	d	s	s	z	t	n	n	e	i	b	s



- could
- children
- old
- kind
- prove
- pretty
- because
- whole
- should
- water
- beautiful
- people
- sugar
- parents





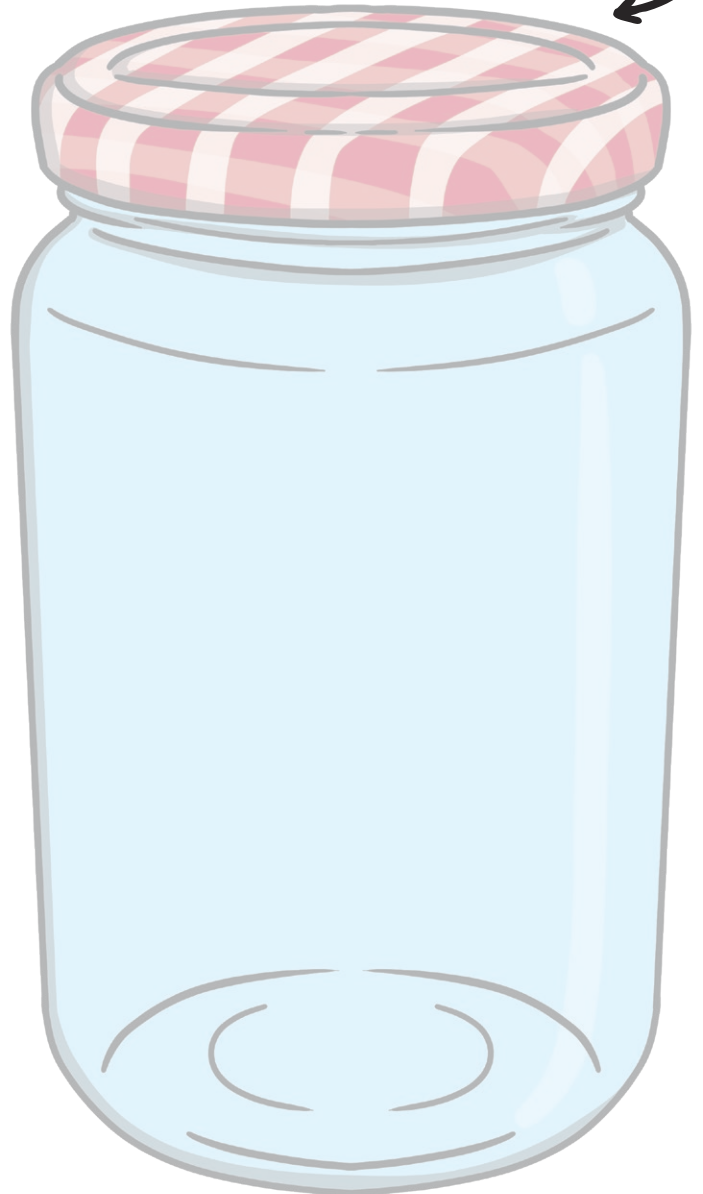
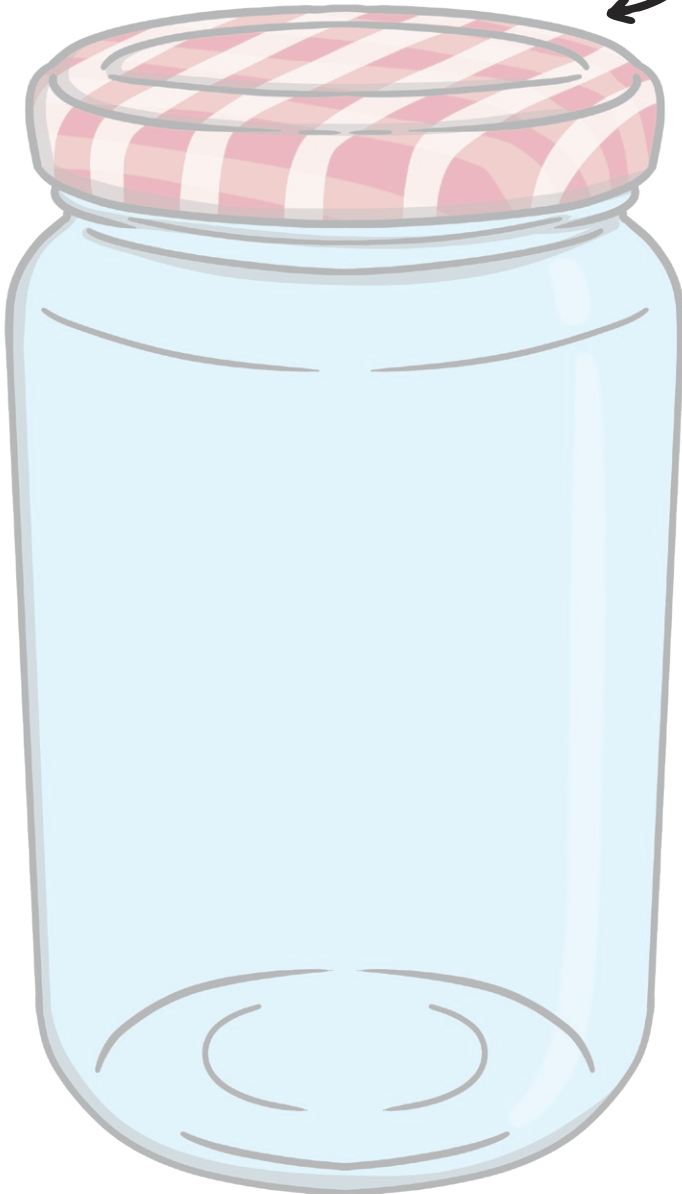
Syllable Search



Look at your common exception word list.
How many words have one syllable?
How many have two syllables?
Write the words into these jars according
to how many syllables they have.

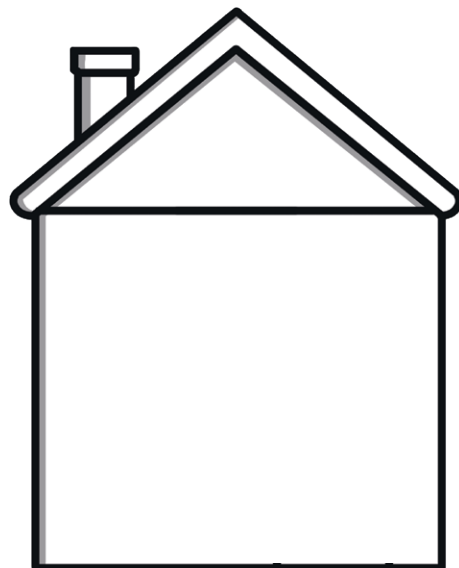
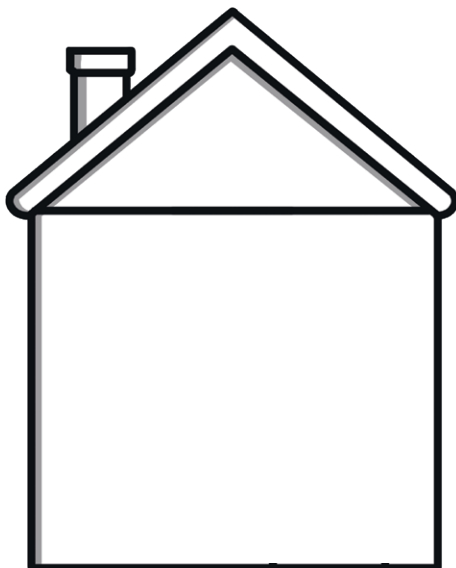
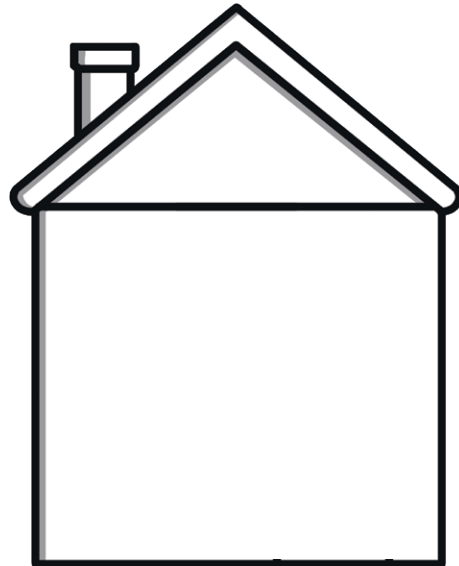
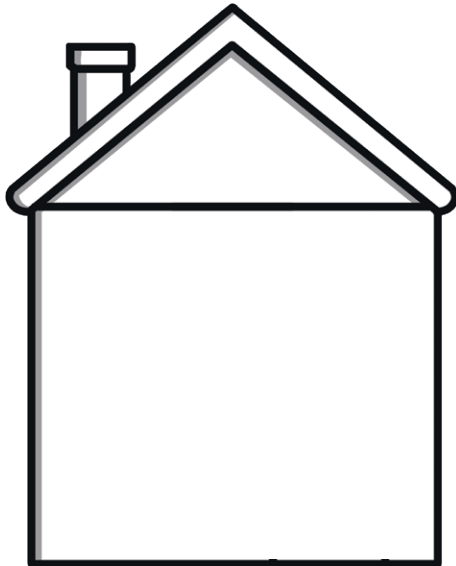
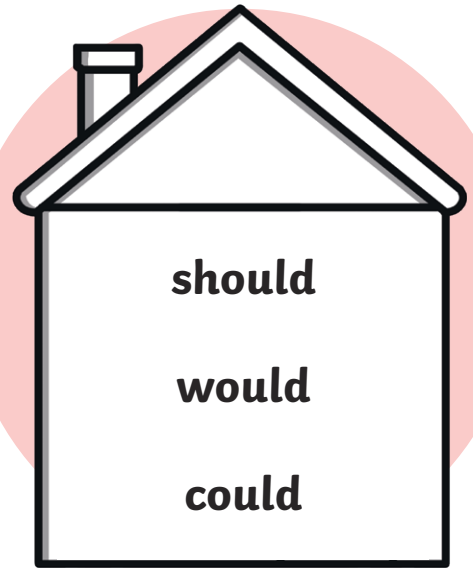
one syllable

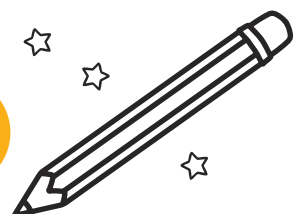
two syllables



Word Families

Look at your common exception word list. Have you noticed that some of the words contain the same string of letters – for example should, would and could? Group the words into families with the same letter string and put them into these houses:

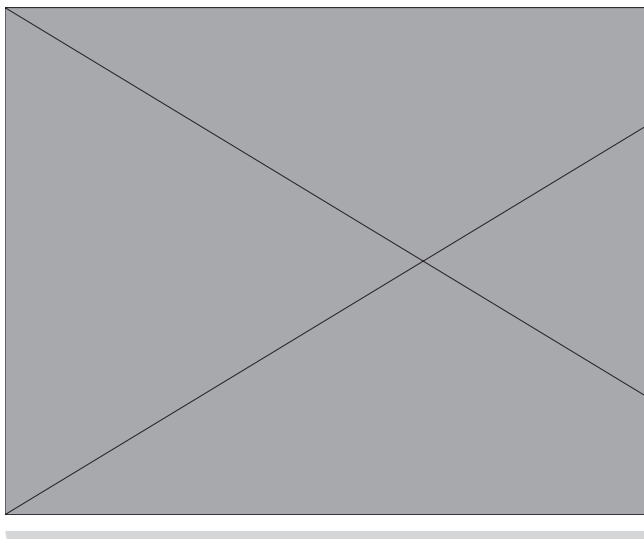




Writing Sentences

Choose a common exception word from the list and write a short sentence with that word in it. Draw a picture to go with your sentence.

Choose one more common exception word from the list and write a short sentence with that word in it. Draw a picture to go with your sentence.



Disclaimer: To ensure the safety of the learners in your setting, it is your responsibility to assess whether adult supervision or other appropriate safety measures are required when using scissors.

Word Search Answers

c	o	u	l	d	a	u	s	u	g	a	r
h	q	p	y	p	e	o	p	l	e	d	s
i	j	k	i	n	d	u	b	g	w	l	m
l	g	p	v	y	p	r	e	t	t	y	p
d	d	r	c	p	y	t	a	l	h	m	h
r	d	o	o	s	h	o	u	l	d	e	p
e	x	v	x	e	w	a	t	e	r	e	a
n	q	e	h	c	j	q	i	k	r	v	r
i	z	r	a	o	f	k	f	w	b	l	e
f	o	z	b	e	c	a	u	s	e	t	n
z	l	i	a	w	h	o	l	e	n	h	t
r	d	s	s	z	t	n	n	e	i	b	s

could
children
old
kind
prove
pretty
because
whole
should
water
beautiful
people
sugar
parents

Syllable Search **Answers**

Look at your common exception word list.
How many words have one syllable?
How many have two syllables?
Write the words into these jars according
to how many syllables they have.

one syllable

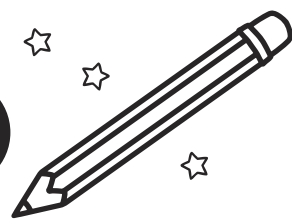
hold
told
great
break
steak
fast
last
past
class
grass
pass
plant
path
bath
hour
move
prove
sure
eye
could

door
floor
poor
find
kind
mind
child
wild
climb
most
both
should
would
who
whole
clothes
half
old
cold
gold

two syllables

because
behind
children
only
Mrs
parents
any
many
busy
people
water
again
even
money
Christmas
Mr
every
pretty
after
even
father
improve
sugar

* Number of syllables may vary according to differences in regional accents.



Word Families **Answers**

Word families could include:

find
kind
mind
behind

any
many

old
cold
gold
hold
told

great
break
steak

fast
last
past

class
grass
pass

path
bath

move
prove
improve

door
floor
poor

* Word families may vary according to differences in regional accent.