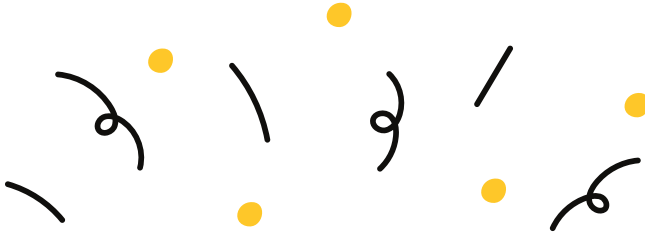


Life at Woodside





WELCOME

We are delighted to welcome you to our school community.

This welcome pack contains important information to help children, parents and carers prepare for the school year, including details about school routines, expectations, uniform, and key contacts.

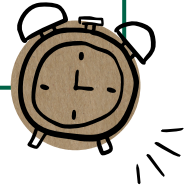
We encourage all children to work hard, take part in school life, and make the most of the opportunities available. If you have any questions or need support, our staff are always happy to help.

We look forward to ensuring your child's journey at Woodside is the very best it can be.



SCHOOL START AND FINISH TIMES

YEAR GROUP	START TIME	FINISH TIME
NURSERY (AM SESSION)	8.25AM	11.25AM
NURSERY (PM SESSION)	12.10PM	3.10PM
RECEPTION	8.30AM	3.10PM
YEAR 1	8.25AM	3.10PM
YEAR 2	8.25AM	3.10PM
YEAR 3	8.25AM	3.10PM
YEAR 4	8.25AM	3.10PM
YEAR 5	8.20AM	3.05PM
YEAR 6	8.20AM	3.05PM



DROP OFF & COLLECTION POINTS



Nursery and Reception gate on **Gittin Street**

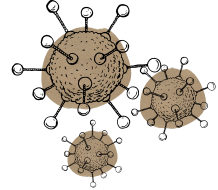
Years 1-4 gate on **Gittin Street**

Years 5&6 gate on **Old Fort Road**

ABSENCE PROCEDURES

If your child is unwell or unable to attend school (unplanned absence)

You must notify the school of the reason for the absence on the first day of an unplanned absence by 8.30am or as soon as practically possible by contacting the school office.



Call

01691 652446: Select option 1 for the Attendance Manager. Parents can leave a message if the phone is unmanned or engaged.



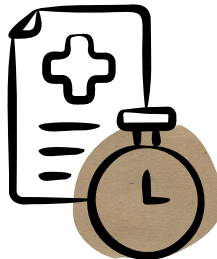
Text

07786 201172: This service is checked regularly throughout the day and is an opportunity to communicate with school.



Email

admin@woodside.shropshire.sch.uk



UNIFORM

You will find our full school uniform policy and dress code on our school website. Uniform can be purchased at the school office, or online using myclothing.com



Nursery	Reception & Years 1-4	Years 5-6
<p>Uniform is not compulsory for Nursery. However, if your child would like to wear Woodside uniform, please refer to Reception and Years 1-4 detail.</p>	<p>Full School Uniform</p> <ul style="list-style-type: none"> • Black or grey trousers/shorts • Black or grey dress/skirt • Yellow/white polo shirt • Dark green cardigan/crew-neck sweatshirt • Socks, white grey or black 	<p>Full School Uniform</p> <ul style="list-style-type: none"> • White shirt – long sleeve or short sleeve • Black or grey or trousers/shorts • Black or grey dress/skirt • School tie • Green v neck jumper • Socks, white grey or black
	<p>P.E Kit</p> <ul style="list-style-type: none"> • Plain white t-shirt/long sleeved top • Plain black shorts/leggings/jogging bottoms • Plain black hoodie/jumper/jacket • Trainers 	

“Please note during the warmer weather yellow or green summer school dresses are appropriate for years 4 and below.”

SCHOOL DINNERS

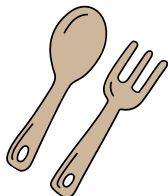
At Woodside Primary School, our menu provides healthy, balanced meals to support children's energy and learning. We offer a range of tasty options.

Did you know... ALL children in Reception, Year 1 and Year 2 are entitled to a **FREE** nutritious meal each day at school! This is often referred to as the **Universal Free School Meal programme (UFSM)**.

Ordering School Meals

Ideally, we would like all parents to pre-select school meals at home, with their child;

- ★ In doing so you will help us to significantly reduce food waste at school
- ★ The process is simple and children often enjoy making the selections at home alongside their parent/carer
- ★ You will know what they have chosen for their school meal, enabling you to plan for meals at home



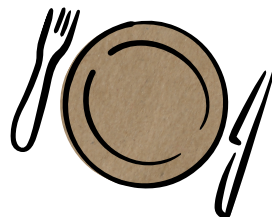
FREE SCHOOL MEALS (FSM)

If you are in receipt of certain benefits, you may also be entitled to benefits-related Free School Meals (FSM). Slightly confusing! ...The difference is that if you are entitled to FSM your child will be able to access a free meal each day regardless of which year they are in, PLUS there are other means of support that you can tap into;

- ★ Once you are in receipt of benefits-related Free School Meals your child's school will receive additional funding (**Pupil Premium**) to help and support your child through their education.
- ★ NEW! From September 2026, FSM status will entitle you to free school trips!

To check if you are eligible go to:

<https://www.gov.uk/apply-free-school-meals>





WE ARE A NUT FREE SCHOOL



We aim to be a nut-free school in order to protect children who have allergies to nuts. We do not allow nuts or nut products in school lunch boxes or for school snacks.

Our **“Nut-Free Policy”** means that the following items should not be brought into school:

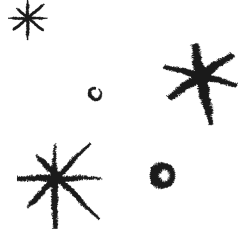
- ★ Packs of nuts
- ★ Peanut butter or Nutella sandwiches
- ★ Fruit and cereal bars that contain nuts
- ★ Chocolate bars or sweets that contain nuts
- ★ Sesame seed rolls (children allergic to nuts may also have a severe reaction to sesame)
- ★ Hummus or houmous as it contains tahini which is made from sesame
- ★ Pesto which contains nuts
- ★ Cakes made with nuts
- ★ Self-serve pastries covered in almonds – for example almond croissants
- ★ Any home-cooked meals for packed lunches that are made from nuts or nut oils



PACKED LUNCHES

We ask that all lunch boxes contain a balanced meal.
The following foods are **not** permitted in lunchboxes:

- ★ Sweets
- ★ Chocolate
- ★ Processed fruit snacks (e.g. Fruit Winders)
- ★ Hot foods or drinks in insulated containers e.g. soup

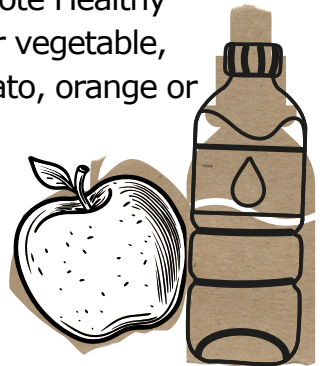


SNACK TIME!

Reception children will stop for 15 minutes to have a mid-morning break where they will be provided with a piece of fruit and a cup of milk or water.

Snacks are provided for all EYFS and Key Stage 1 children through a government scheme to help promote Healthy Eating. The snack is always a piece of fruit or vegetable, usually either an apple, banana, carrot, tomato, orange or raisins.

Children need to bring their own labelled water bottle in every day. We will refill throughout the day.



PAYMENT/COMMUNICATION PLATFORMS

Communication is central at Woodside, and keeping our parents and carers informed is a top priority. We use a range of platforms to manage both communication and payments effectively.



Eduspot

We use Eduspot to send text messages and school emails, we utilise the School Money function to collect payment for **Nursery fees, wrap-around care, trips, clubs, etc.**



schoolmoney



ParentPay

School dinners should be prebooked through the ParentPay app. **You can select menu options and make payment (where relevant).**

WRAP AROUND CARE



A booking form is included in your welcome pack.
Alternatively you can find this on our school website.

BREAKFAST CLUB

7.30 - 8.30AM (INCLUDES FOOD UNTIL 8AM)*

8.00 - 8.30AM (NO FOOD)

AFTER SCHOOL CLUB

CHILDREN WILL BE TAKEN TO AFTER SCHOOL CLUB BY STAFF ONCE THEIR CLASS HAS FINISHED.

3.10 - 4.00PM

3.10 - 4.30PM (INCLUDES A LIGHT TEA)*

3.10 - 5.30PM (INCLUDES A LIGHT TEA)*



“ See our website for current prices. ”

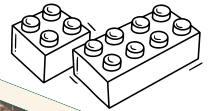
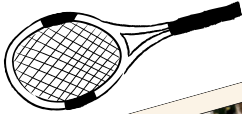


EXTRA CURRICULAR ACTIVITIES

Our clubs change half-termly, providing a fresh selection of extra-curricular activities to choose from as well as firm favourites!

Some of the clubs our children have enjoyed are: Football, Dodgeball, Cricket, Tennis, Badminton, Pickleball, Archery, Basketball, Tri-Golf, Hockey, Mindfulness, Yoga, Art, Choir, Board & Card Games, Sensory Play, Forest School, Gardening, Rounders, Creative Writing, Junk Modelling, Lego, Pokemon, Kurling, Computing, Programming & Coding, Cookery, Craft, Sketching, the chance to complete homework with the help of a teacher....plus many more.

In addition, Chloe Elizabeth Dance Company - CEDC and Border Counties School of Gymnastics - BCSG, offer after-school dance and gymnastics sessions here at Woodside! See our website for current clubs and how to book a place.



FOREST SCHOOL

At Woodside, we love getting outdoors! Our Forest School sessions give children the chance to explore, play, and learn in a natural environment, whatever the weather.



What are the benefits?

- ★ Builds confidence and self-esteem
- ★ Encourages teamwork and communication
- ★ Develops a love of nature
- ★ Promotes independence and resilience
- ★ Supports wellbeing and mental health



Please make sure your child comes dressed for the outdoors (think muddy, wet, and wonderful!). Waterproofs and sturdy footwear are a must.

Forest School is a fantastic part of life at Woodside, helping children create lasting memories while learning important life skills.



FRIENDS OF WOODSIDE SCHOOL - FOWS

FOWS is our Woodside PTA and relies on volunteers from our school community to organise fundraising activities for our children. Would you like to get involved in supporting our school?

Even if you can only spare 30 minutes every now and then, you can make a real difference to our school. Come and speak to one of us to find out more!



These are some of the events FOWS have organised and run in the past.

- ★ Summer Fayre
- ★ Easter Egg Hunt
- ★ Halloween Hair Day
- ★ Discos

These are some of the benefits the children have recently enjoyed thanks to FOWS:

- ★ Trips and transport paid for/subsidised
- ★ Swimming lessons
- ★ Year 5/6 diaries
- ★ Leavers autograph books
- ★ Playground equipment/markings



FACEBOOK

Finally, please follow us on Facebook. We share regular updates of what children have been up to, celebrate success and provide reminders for upcoming events.



[Woodside Primary School, Oswestry | Oswestry | Facebook](#)



W

WOODSIDE

